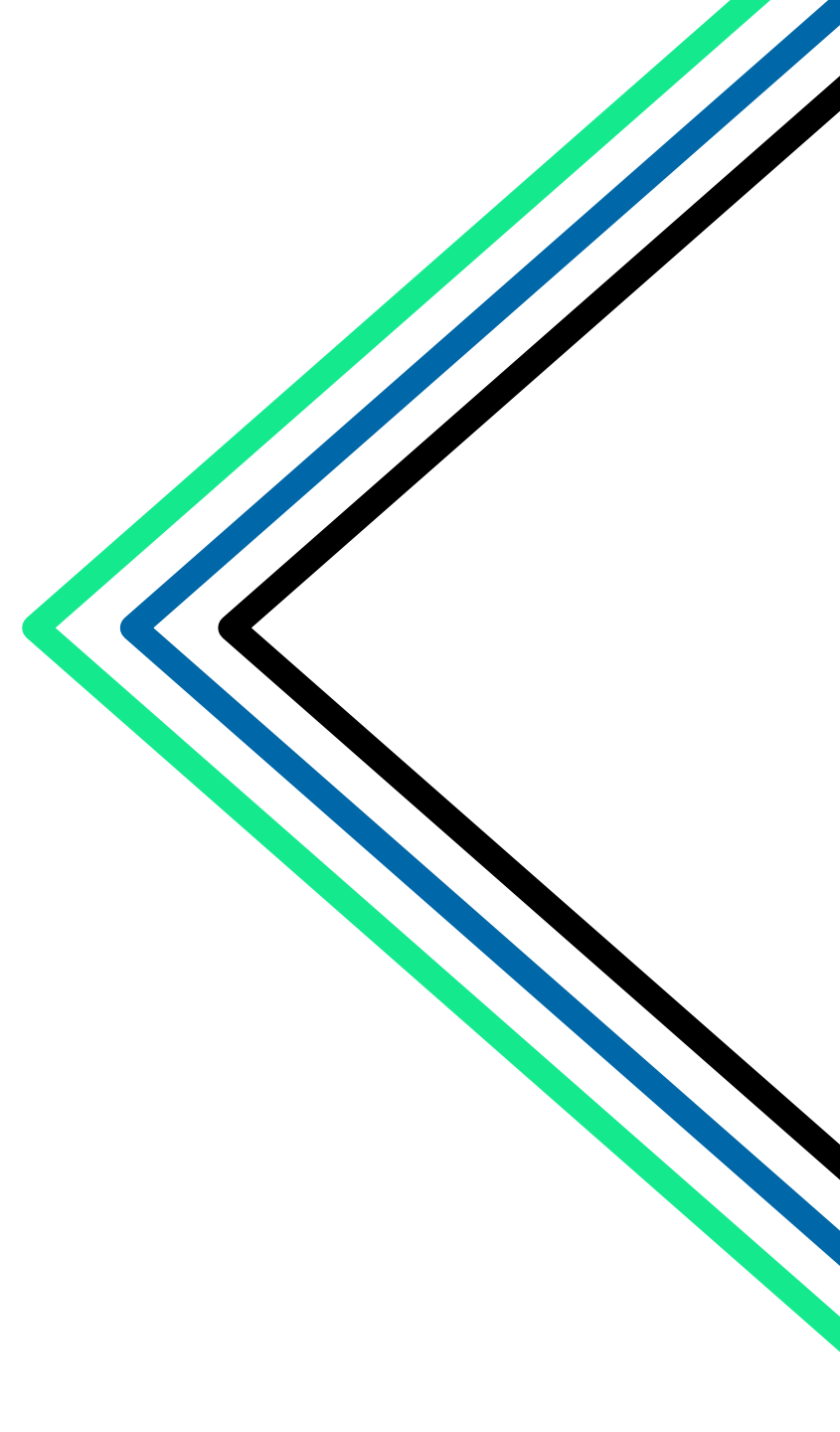
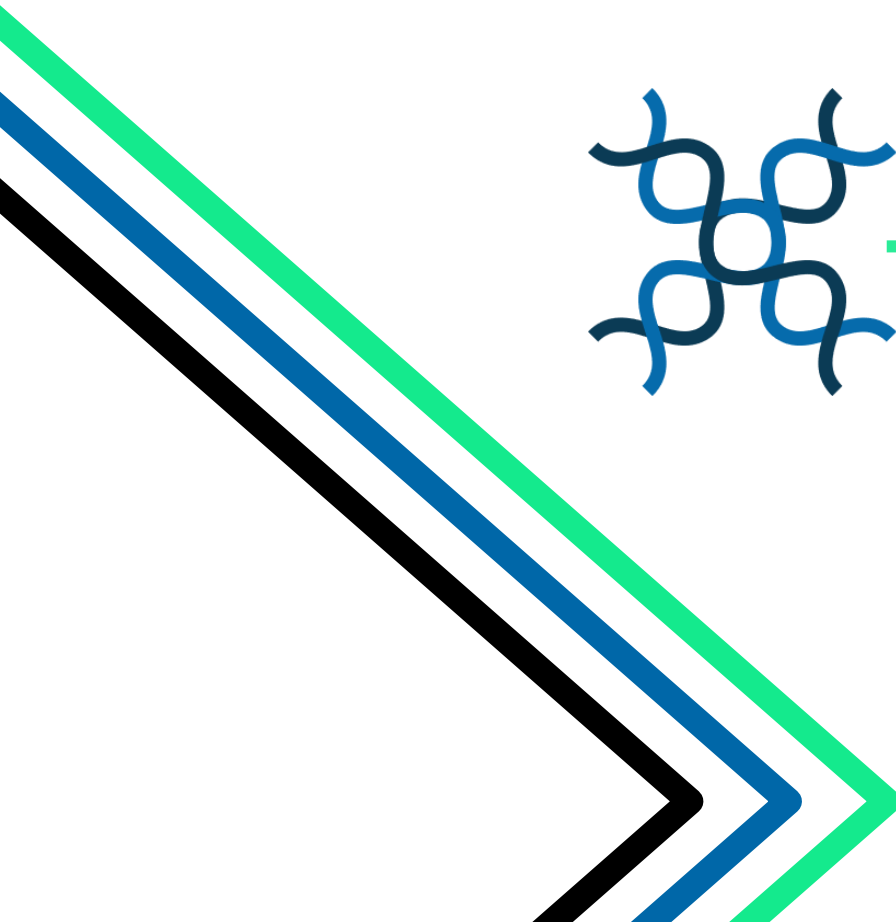


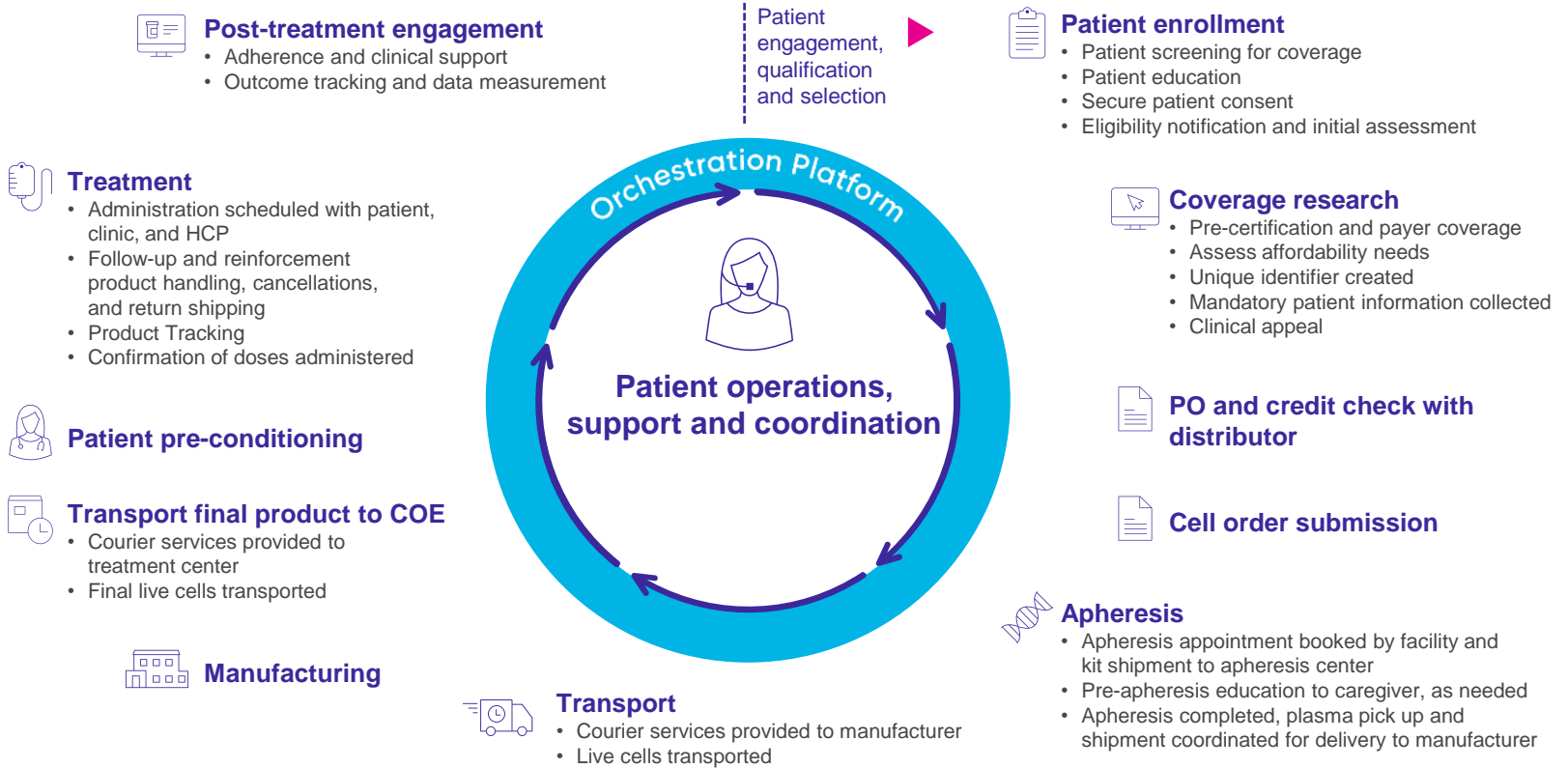
OPEN
- **CELLERATOR**
COMMUNITY



Scale up: The need for Transportation Excellence for C&G shipments

Martin Pohle, World Courier

Objective 1: A connected ecosystem for CGT therapies



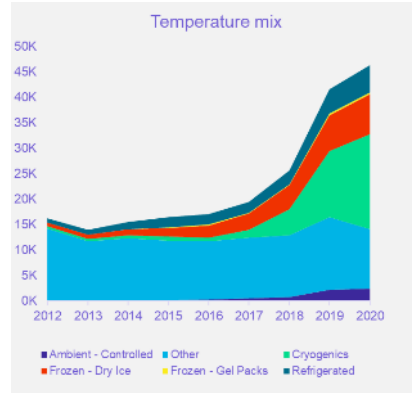
Cryogenics drives CGT

CGT Services

Packaging solutions: ambient, refrigerated, frozen – 20 to -80°C, cryogenic

Shipment solutions: real-time tracking of temperature & location, import/export management

Integration with cellular orchestration platforms



• Service foundations

Global SOP to ensure compliance and consistency of setup / execution

Dedicated resourcing, inclusive of in-country expertise

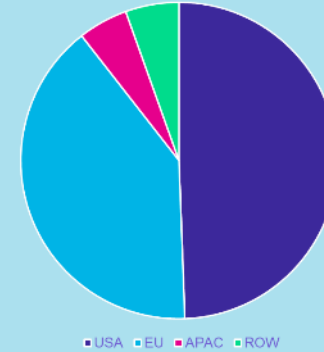
Highly trained customer service, operations and driver staff

Standardized, flexible, innovative and continuously improving service

Our CGT experience

Track record

Data: Jan 2021 - Dec 2021



232 customers

117 customers more than 1 shipment per month

including

29 gene therapy customers

34 cell therapy customers

23 allogeneic therapy customers

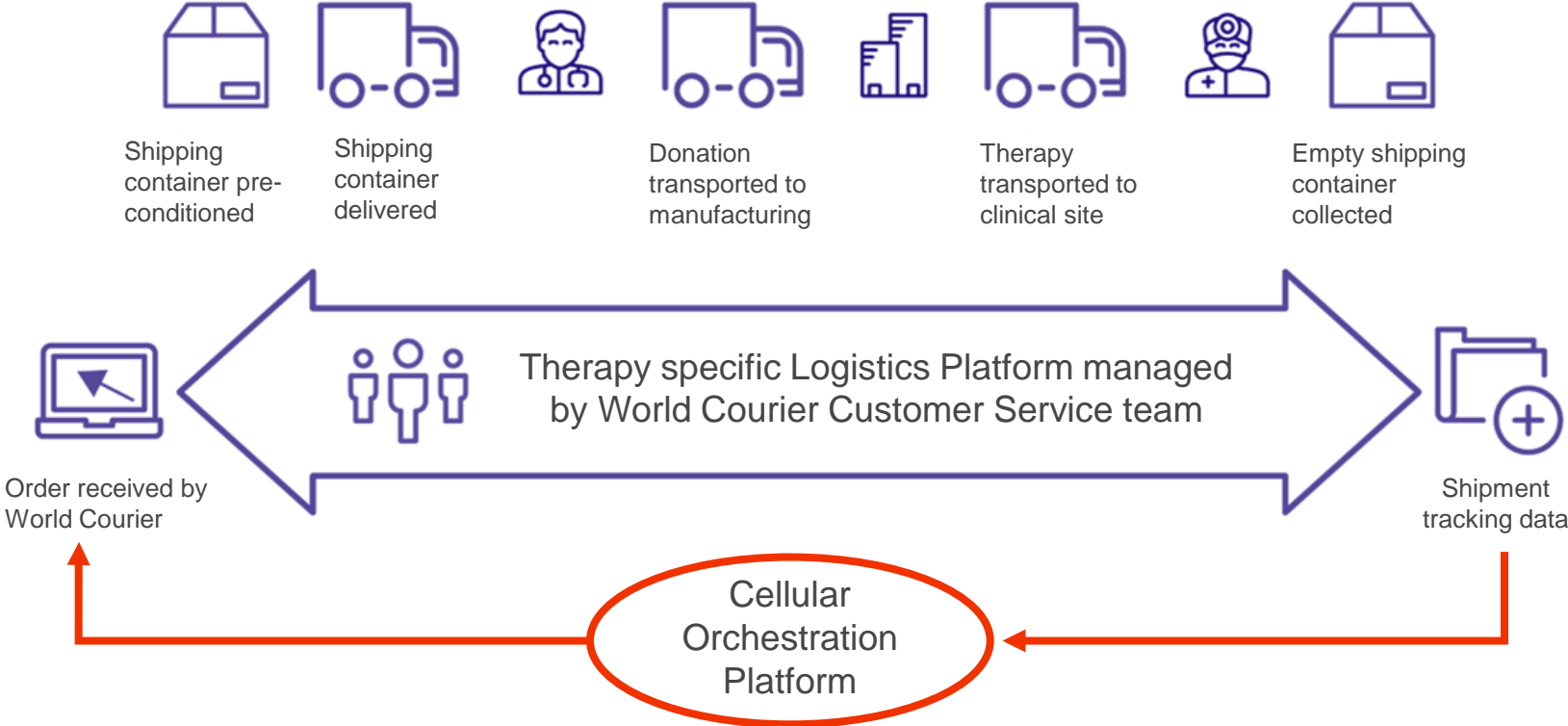
13 autologous therapy customers

41.242 shipments 2021

Service growth

- Cryostorage in GMP depots in US, Mexico, Japan, expansion to all World Courier depots possible
- GMO license in Brazil
- EU CGT hub available 2023 including cryostorage and import for clinical and commercial ATMP's

Objective 2: Build and manage vein-to-vein logistics



Cryogenic Packaging Technology



VIA Capsule

Unique LN₂ free technology with inbuilt tracking

- Ideal for users not familiar or not permitted to use LN₂
- Extended storage at treatment center, powered by electricity
- Shipper of Cytiva's cell therapy system



SAVSU

Smart shipper with inbuilt tracking

- Designed for all standard cell and gene therapy packages
- Qualification period is 10 days

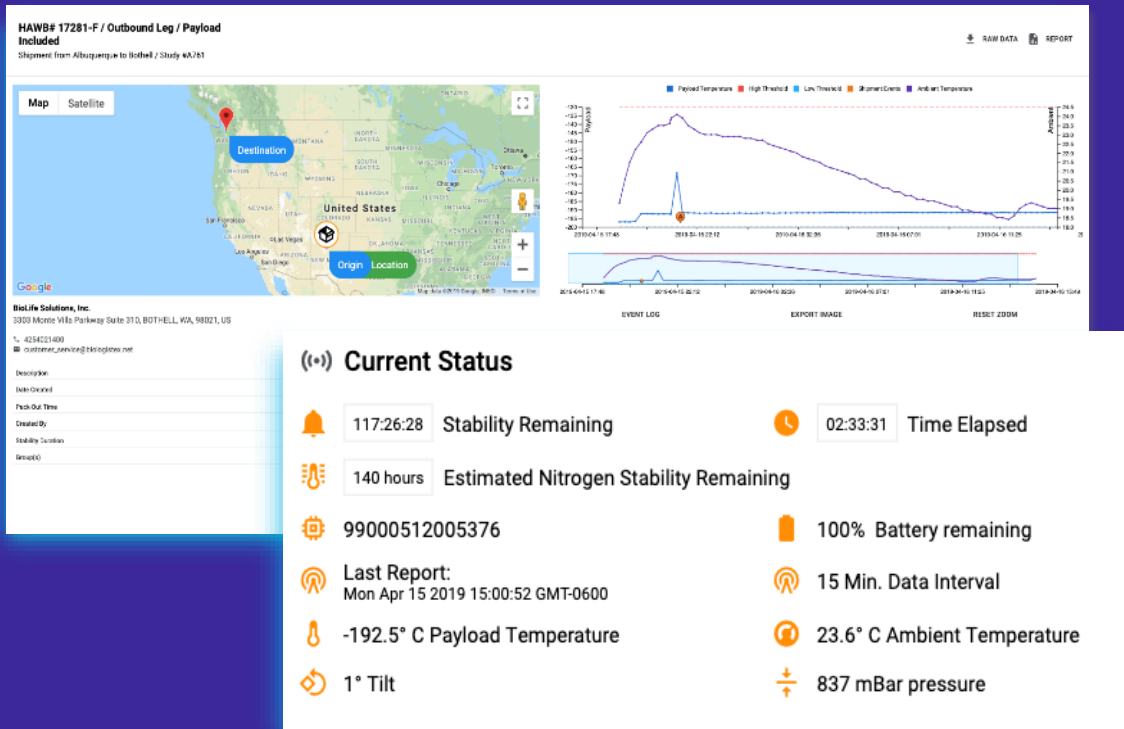


Palletized MVE

Established, widely used dry shipper

- Suitable for large quantities
- Qualification period is 10 days

Real Time Tracking



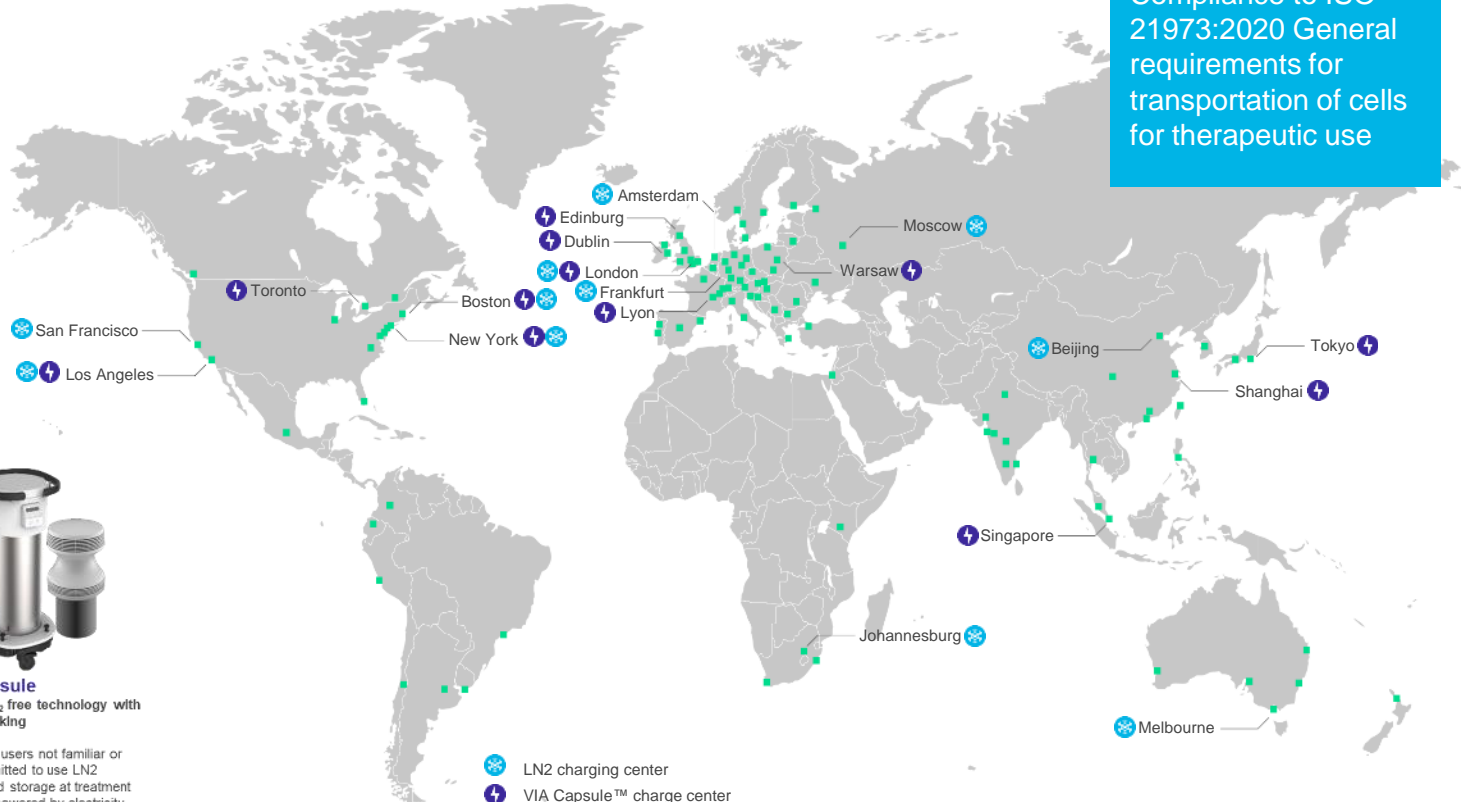
SAVSU Smart shipper with inbuilt tracking

- Site users can verify current temperature without accessing a website
- Blinks for out of range; displays solid for in range.
- Real time temperature reading if shipper can't access cellular network.
- Optimized insulation and smart cap for long performance
- No pallet, easy to move due to wheels – like trolley
- Fast preparation of shipper (not more than 4 hours)
- Multiple payload options

Global Cryogenic Storage and Filling Network

- Multiple charge stations strategically positioned throughout the global network
- Ability to intervene as needed to manage unexpected events and unscheduled delays
- Driven by a single quality system and underpinned by established SOPs
- Supporting over 10,000 cryo shipments annually

Compliance to ISO 21973:2020 General requirements for transportation of cells for therapeutic use



SAVSU
Smart shipper with inbuilt tracking

- Designed for all standard cell and gene therapy packages
- Qualification period is 10 days

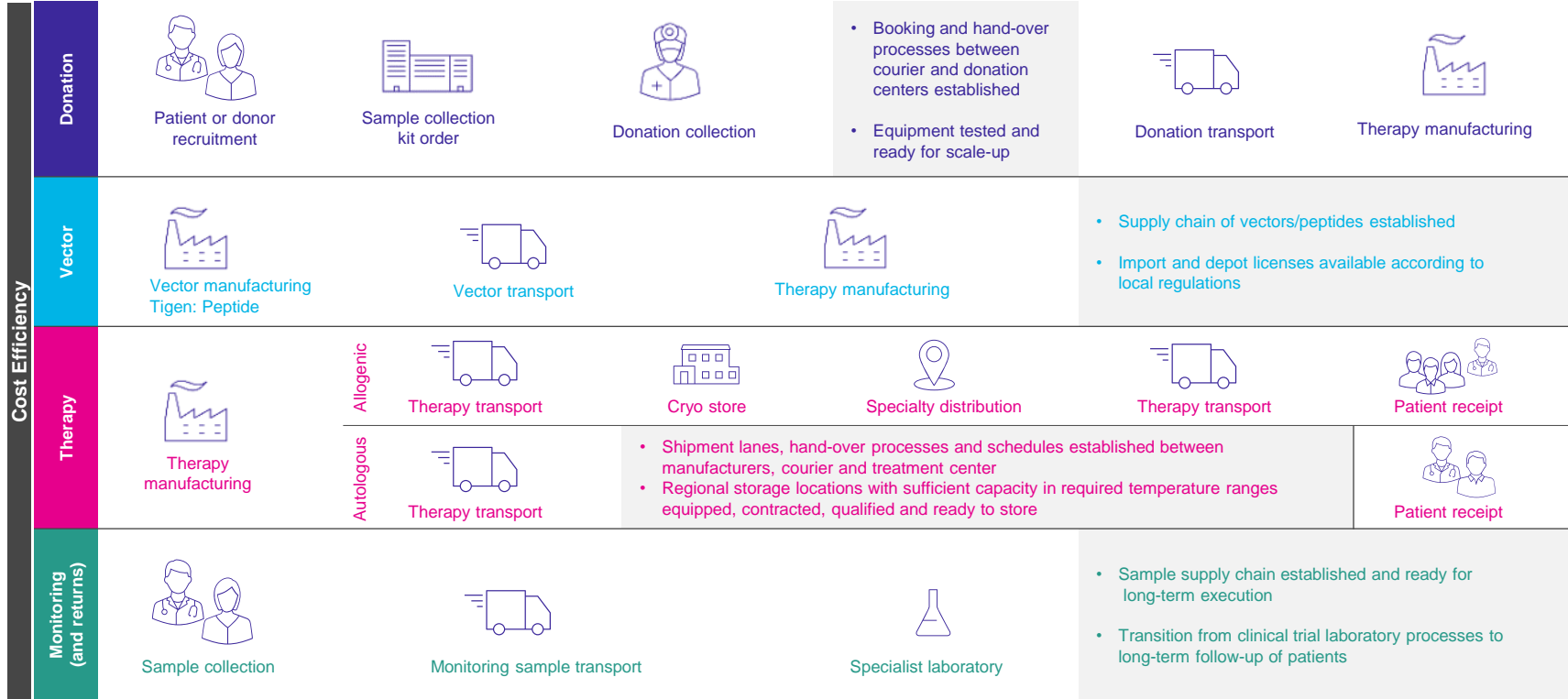


VIA Capsule
Unique LN₂ free technology with inbuilt tracking

- Ideal for users not familiar or not permitted to use LN₂
- Extended storage at treatment center, powered by electricity
- Shipper of Cytiva's cell therapy system

- LN₂ charging center
- VIA Capsule™ charge center
- World Courier offices, with charging capability

World Couriers logistics scenarios are scale-up ready from Day 1



Thank you



JOINTLY CREATING THE FUTURE OF CELL & GENE THERAPY ORCHESTRATION